



NHS North Central London – Barnet Estates Update

February 2023

Completed Estates Projects



1) Borough Wide

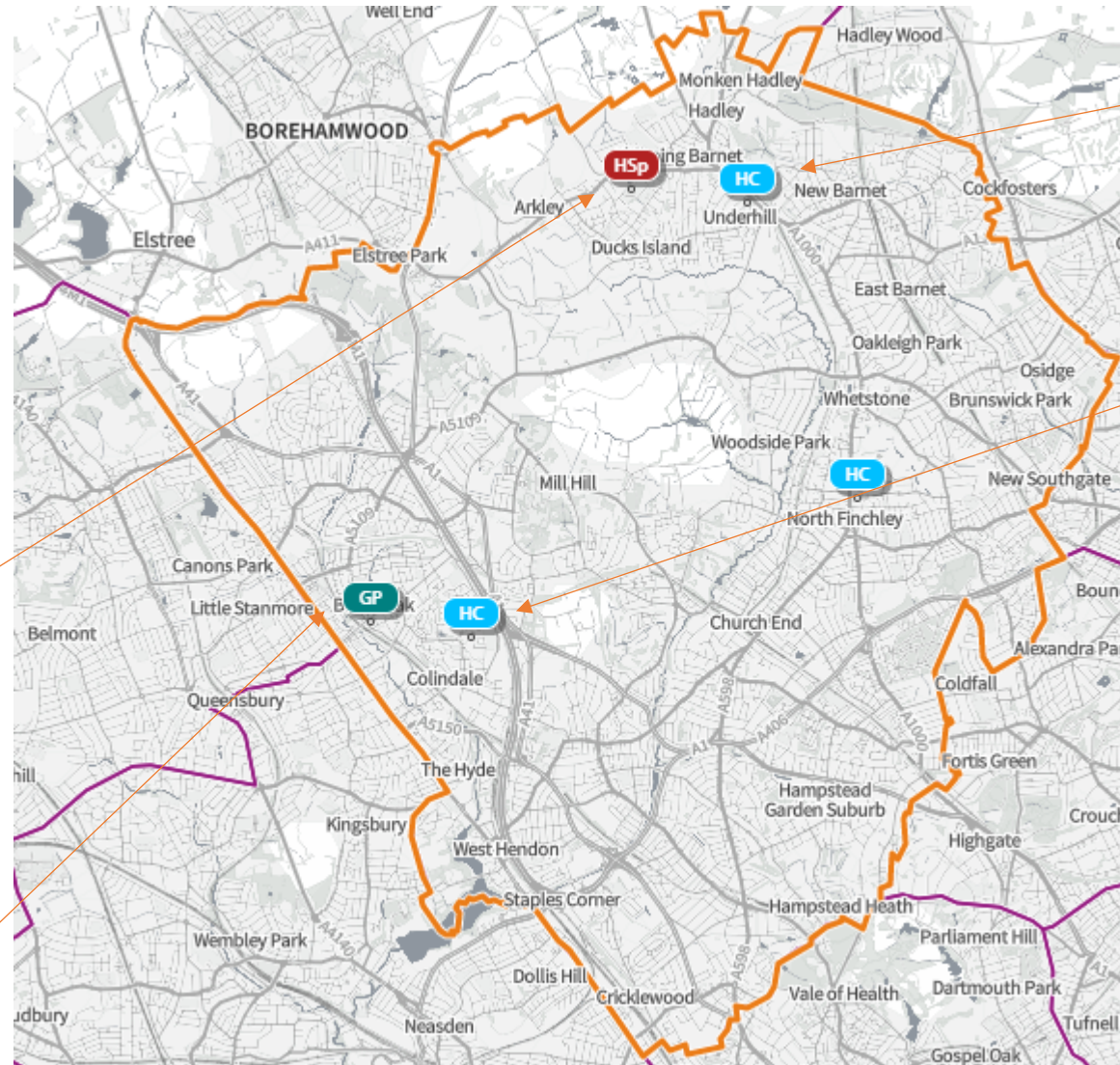
- Digital Patient Check-In Kiosk and patient information boards across all Primary Care Sites
- Patient Chase Upgrade- IT upgrade
- Patient Records digitisation and room conversion
- Improvement Grants Programme 18/19-21/22 (Circa £747,000)

2) Barnet General A & E Refurbishment

- Expansion of the A & E and creation of a new UTC
- ICB & RFL collaboration
 - S106 funded

3) Cressingham Road

- Branch Site relocation and Primary Care Expansion
 - ETTF & s106 funded



4) Vale Drive Clinic

- Internal reconfiguration and Primary Care Expansion
 - Landlord capital

5) Grahame Park Health Centre

- Essential works to extend the life of the building
 - Council funded

Schemes in planning or live



North Central London
Integrated Care System



1) Edgware Community Hospital

- Optimisation, disposal & refurb programme

2) Colindale Integrated Hub (New build)

- Outline Business Case in progress
 - S106 funded

3) Brent Cross Regeneration

- Potential opportunity – shell & core (4,500sqm)
- Partnership working with LBB
 - SOC in progress

4) Osidge Library One Public Estate scheme

- Primary care consolidation
- NHS Proper Services disposal
- Feasibility study in process

5) Torrington Park Health Centre

- Optimisation & refurb programme
- Multiple funding sources

6) The FMH Community Diagnostic Centre (CDC)

- The first NHS specialist CDC to open in England following the COVID-19 pandemic
- On track to have seen an additional 100,000 patients by March this year

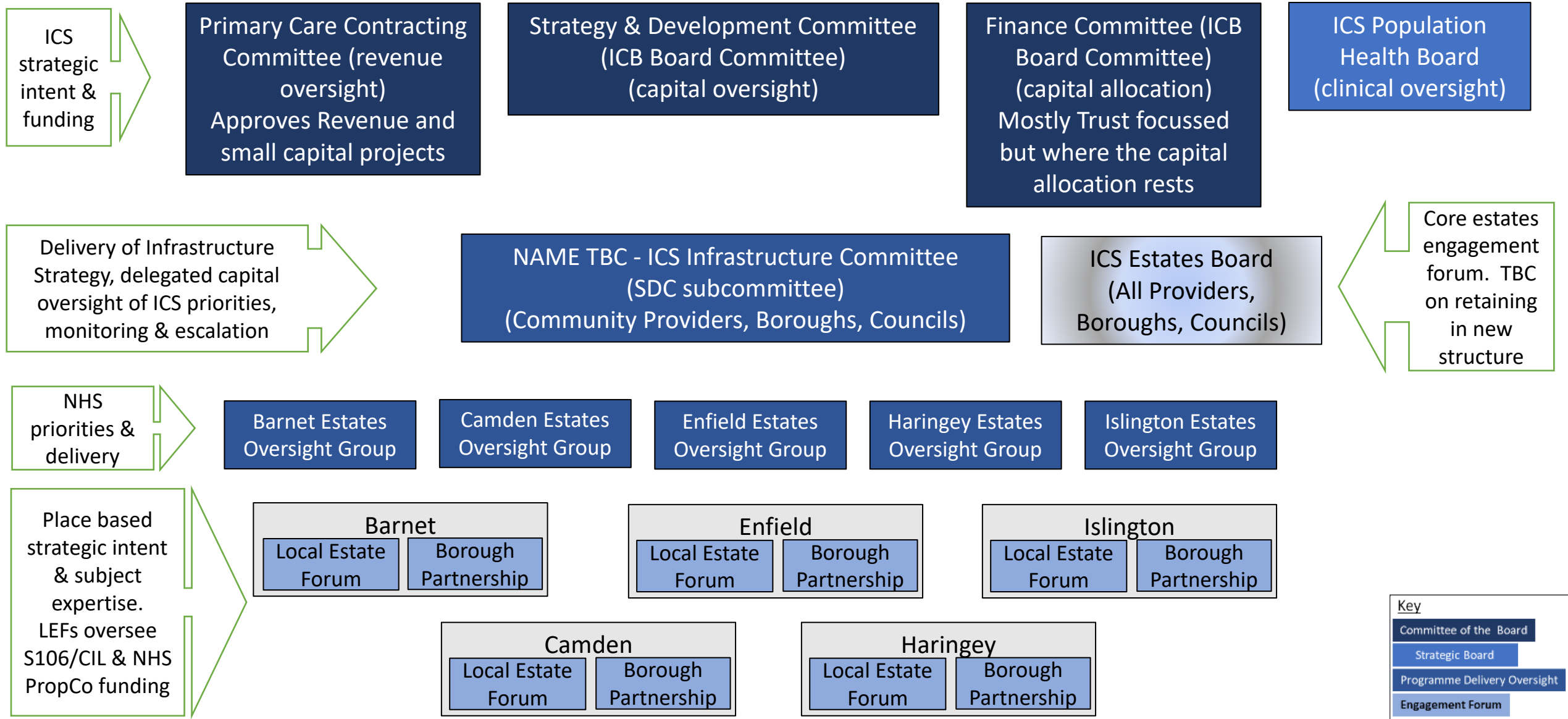


The need is to move some of the diagnostics

NHS NCL ICB Estates Governance Overview

Primary & Community Estates Governance updated structure – Final draft

(with funding sources notes)



Attendees

NAME TBC - ICS Infrastructure Committee
(SDC subcommittee)
(Community Providers, Boroughs, Councils)

ICS Estates Board
(All Providers,
Boroughs, Councils)

Barnet Estates
Oversight Group

Borough
Local Estate Forum Borough Partnership

Chair – SMD, ICB finance, NCL DOE & estates team
Attendees – Representatives from DOI team & Estates Borough teams, Council + primary care & contracting, community providers, ALBs

Chair – PW, ICB finance, NCL DOE & estates team
Attendees – All providers, EDS&T, borough estates leads, Council, community providers

Chair – Borough DOI
Attendees – primary care lead, contracting lead, borough estates lead

Chair – Borough DOI
Attendees – All providers, Borough estates leads, Council leads (planning, strategy), primary care lead

Questions?

'Estates are so much more than buildings. We must move to a model that makes estates a catalyst for integration rather than a barrier to it.'

The Fuller Stocktake Report